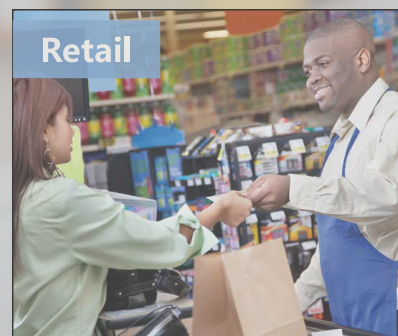




INNOVATION. COMMITMENT. EXCELLENCE



# IS-8505



## Features

Support 1D, 2D, screen code, paper barcode scanning

CMOS image scanning, accurate acquisition of barcode information

Plug and play, simple setup, fast use

ABS+PC material, shockproof and drop resistant

Compatible with a variety of mainstream systems



# Technical Specifications

## Specification

### Performance Parameters

Ligth Source:	640 pixels(H) x 480 pixels(V)
Supported Symbologies:	<b>1D:</b> Codabar, Code 39, Code 32 Pharmaceutical(PARAF), Interleaved 2 of 5, NEC 2 of 5, Code 93, Straight 2 of 5, Industrial, Straight 2 of 5 IATA, Matrix 2 of 5, Code 11, Code 128, GS1-128, UPC-A, UPC-E, UPC-E, EAN/JAN-8, EAN/JAN-13, MSI, GS1 DataBar-Omnidirectional, Korea Post, GS1 DataBar Limited, GS1 DataBar Expanded.China Post(HongKong 2 of 5), <b>2D:</b> PDF417, Micro PDF417, QR code, Data Matrix, Maxi Code, Aztec, HanXin, Codablock A, Codablock F, GS1 Composte Coders.
Field of view:	44°(H) , 34°(V)
Scan Range:	10-110mm(EAN 13 13mil, PCS=90%)
Print Contrast:	20%
Scan Mode:	Automatic Induction Scanning
Man-machine Interaction:	Ring light: green, top indicator light: blue; both the code reading ring light and indicator light flash. Buzzer: start prompt, code reading prompt.
Recognition angle range:	Turn $\pm 360^\circ$ , Elevation $\pm 65^\circ$ , Declination $\pm 65^\circ$
Interface:	USB(Drive-Free), RS232, USB-COM

### Physical Parameters

Dimensions:	96mm*108mm*150mm
Weight:	316g
Material:	ABS+PC
Cable Length:	2M

### Electronic Parameters

Working Voltage:	DC5V $\pm$ 5%
Current:	Standby Current 190mA; Working Current 240mA

### Environmental Parameters

Operating Temperature:	-20°C~60°C
Storage Temperature:	-30°C~70°C
Relative Humidity:	5% ~95% RH (non-condensing/non-freezing)
Shock Resistance:	Withstands multiple times 1.5 meters drops to concrete
Ambient light intensity:	0-100,000LUX

## Product Size

