

CD 7220 Setup Utility v1.1b

1. Installation

Note: The CD7220 Setup Utility runs in Windows 95, 98 and NT environments.

- Insert Setup Disk 1 into floppy drive.
- Open contents of the floppy drive.
- Execute **Setup.exe** by double clicking on the Setup Icon.
- You will be prompted with default setup path, if this is ok then click on the install icon to begin installation. Otherwise you may choose a different path to install.

2. Using the Setup Utility

I. PC Communication Setup

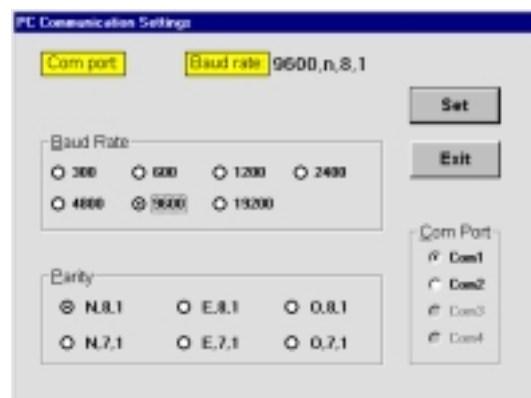
- From the *start* menu under *program*, select **CD 7220 Setup Utility** from the program group.
- Once the application is loaded, you must setup the serial port communications. This is done by selecting **Display Setting>Communication parameters>Communication set**.



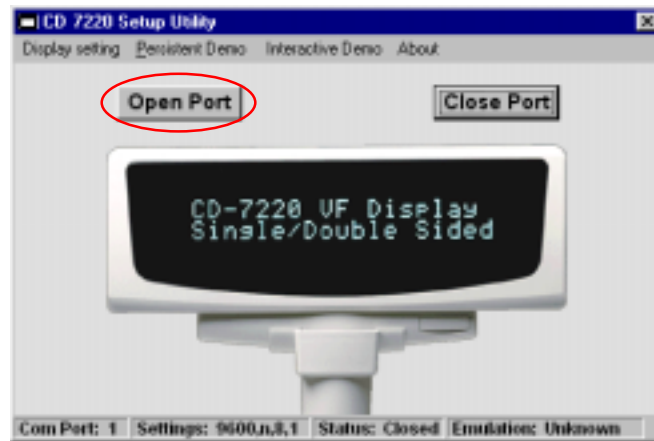
- Within the PC Communication Settings window, you will be prompted to select which COM port the CD7220 Display is attached. If the Com port is ghosted, it is not available to the system and would have to be configured through Windows setup.
- Next, select the *Baud Rate* in which the CD7220 Display is set, then select the *Parity* settings to match (if unknown, select N,8,1). These settings *must* match the CD7220 Display settings in order to make any changes to the Display itself.

***Note:** To verify the Display settings, powering the unit off/on will show current Display settings followed by the self- test mode.*

- Once complete, select **Set** – then **Exit**.



- f. Lastly, to initiate the communication between the CD7220 Display and PC, open the Com port by pressing **Open Port**.



Note: Certain functions will automatically close the Com port such as running the persistent demo, and therefore will be prompted to open port when needed.

II. CD 7220 Display Communication setup

- a. To change the communication for the CD7220 Display itself, select:
Display Settings>Communication parameters>Display set



- b. Within the Display Settings Window, select the Baud Rate and Parity usually specified by the software that will be communicating with this device.



- c. After making the selection, select OK.

- d. This will reset the Display to show the corresponding settings.

***Note:** Once the Display has been set, all communication between the PC and Display will be broken. To correct this, the PC communications settings must be set to match the NEW Display settings. To verify the current settings for the Display, powering unit off/on will show them followed by the self -test mode.*

III. Emulation Mode Selection

- a. To select Emulation Type, Select **Display Settings>Emulation mode>[Emulation desired]**.



- b. Once selected, the CD7220 Display will reset itself and show the new Emulation type

***Note:** The bottom status bar does not read the emulation type from the CD7220 Display, but is for reference only. Therefore when the Setup Utility is first started it reads **Unknown** for Emulation type.*

IV. International Character Set

- a. Within the International Character Set Window many character types are supported.
- b. Make the desired selection, Press OK to activate selection.
- c. The CD7220 Display will reset to reflect the changes made.

